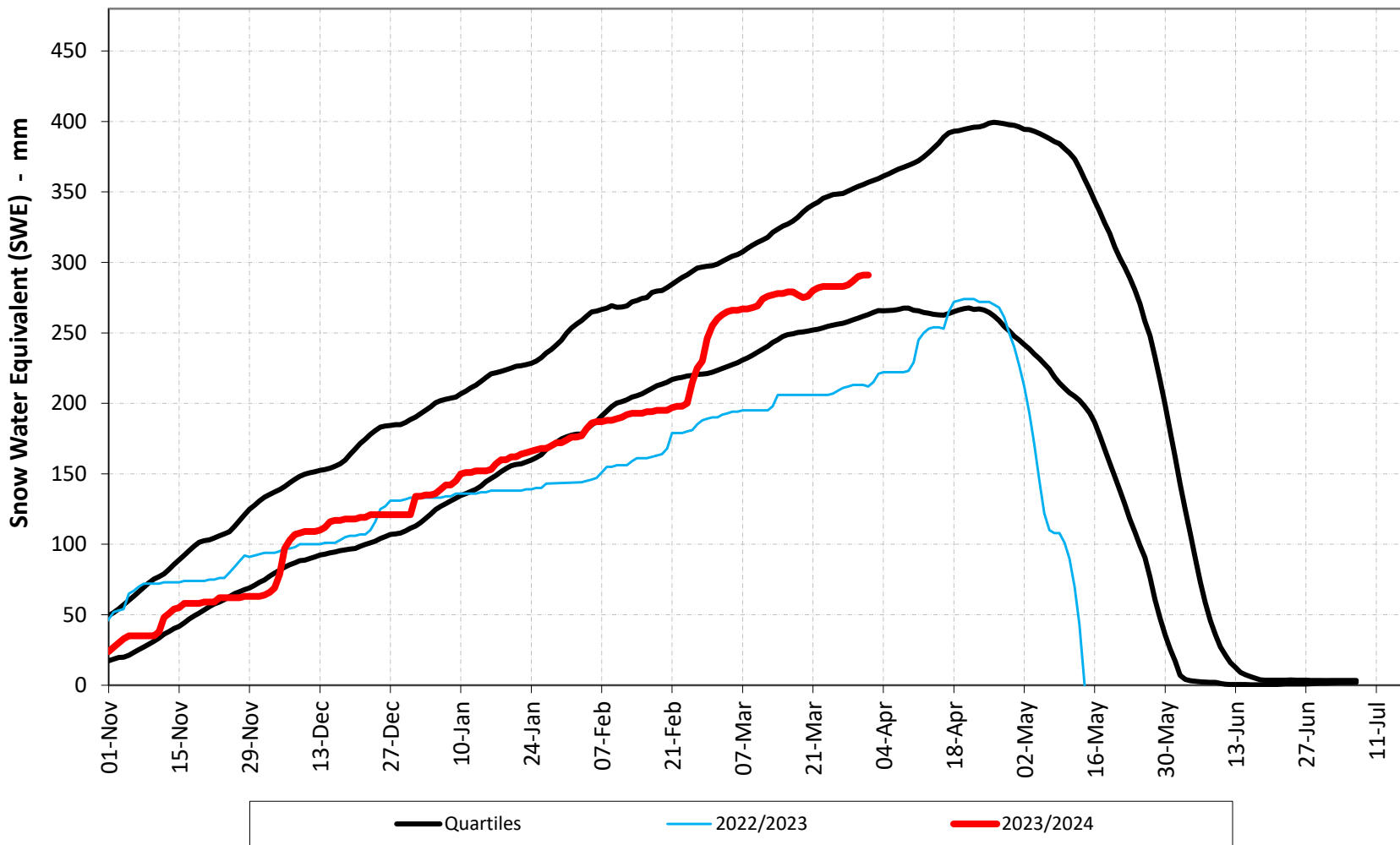


2023/2024

Skoki Snow Pillow

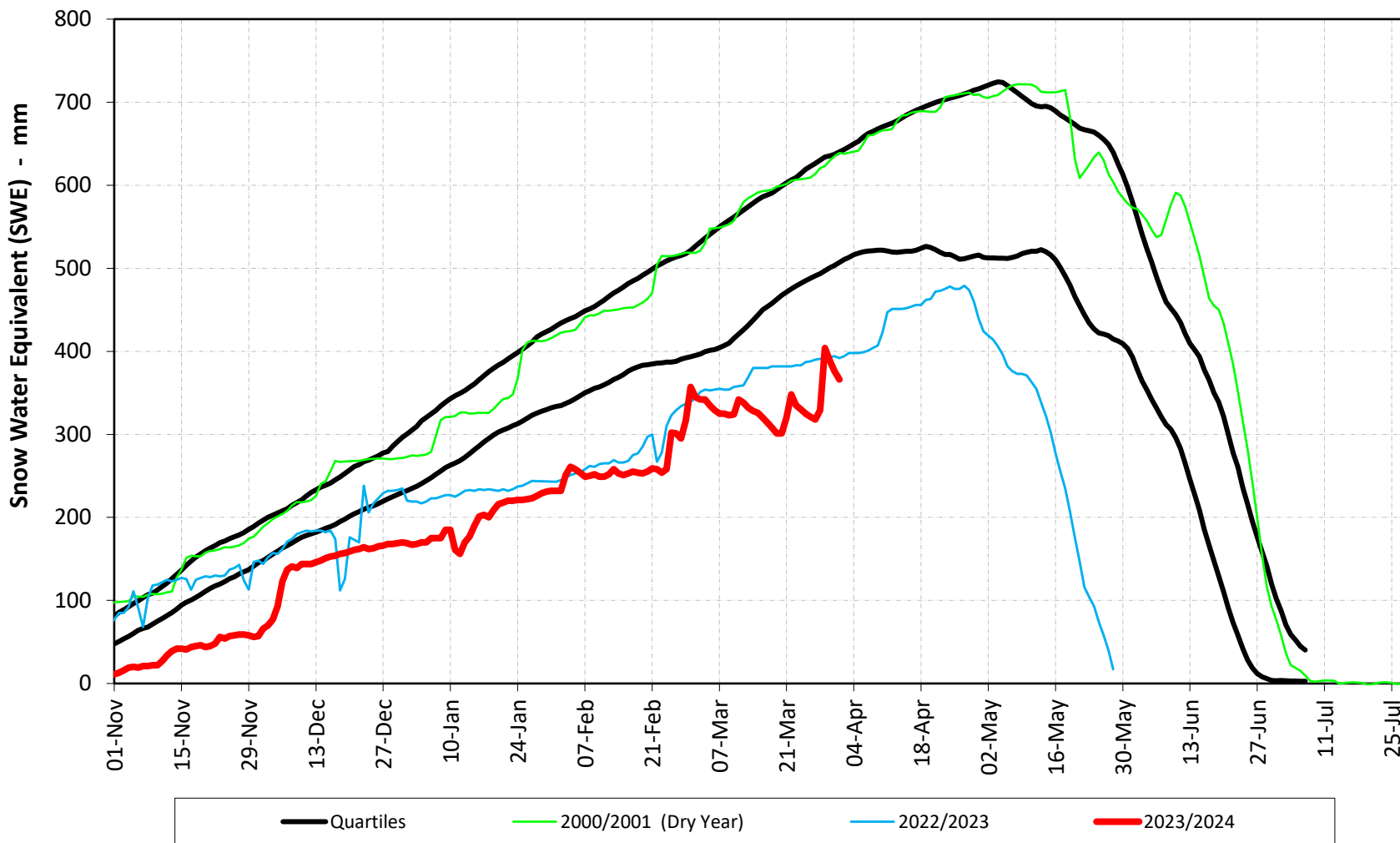
(Red Deer River Headwaters)
2040 metres



2023/2024

Sunshine Snow Pillow

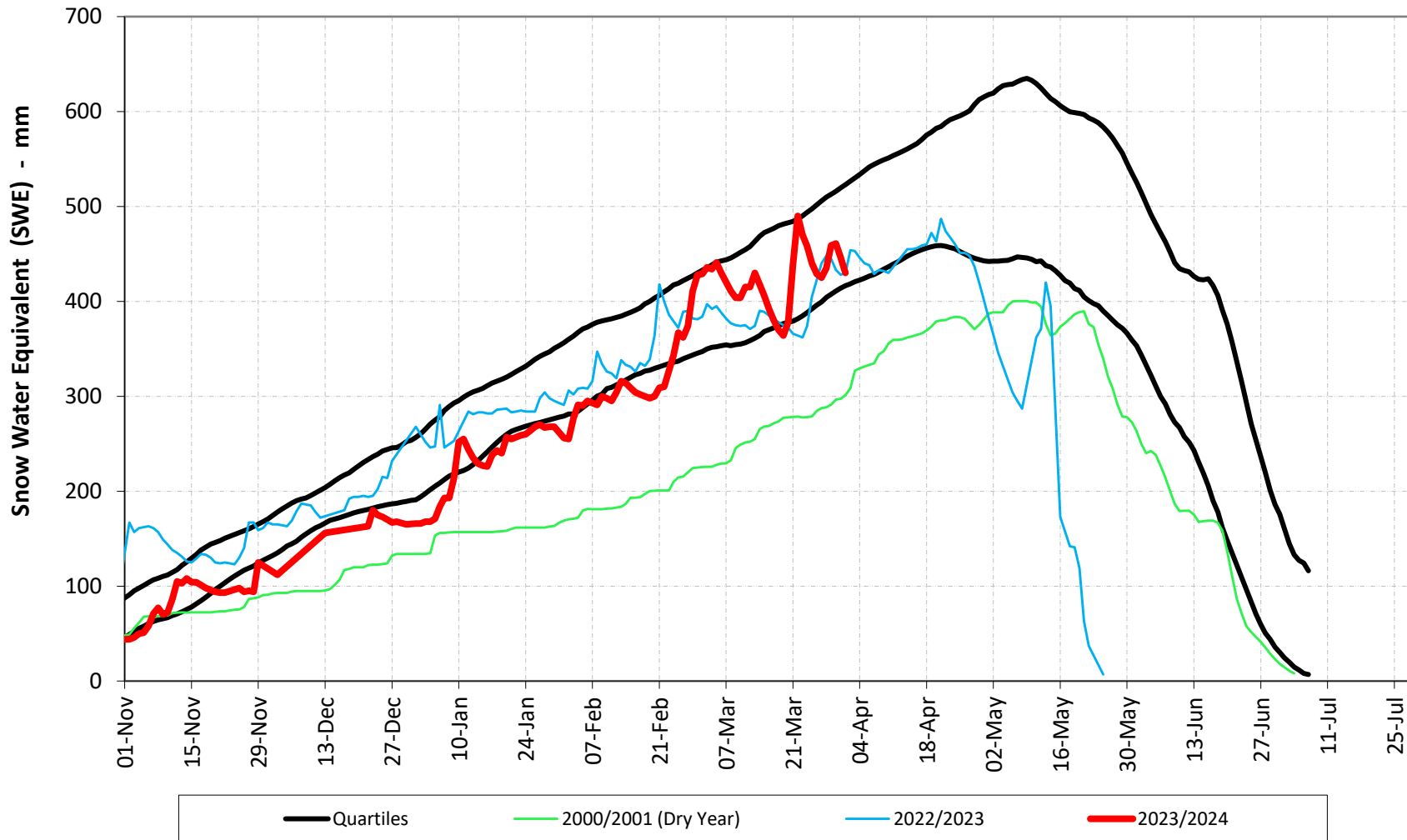
(Bow River Headwaters)
2230 metres



2023/2024

Three Isle Lake Snow Pillow

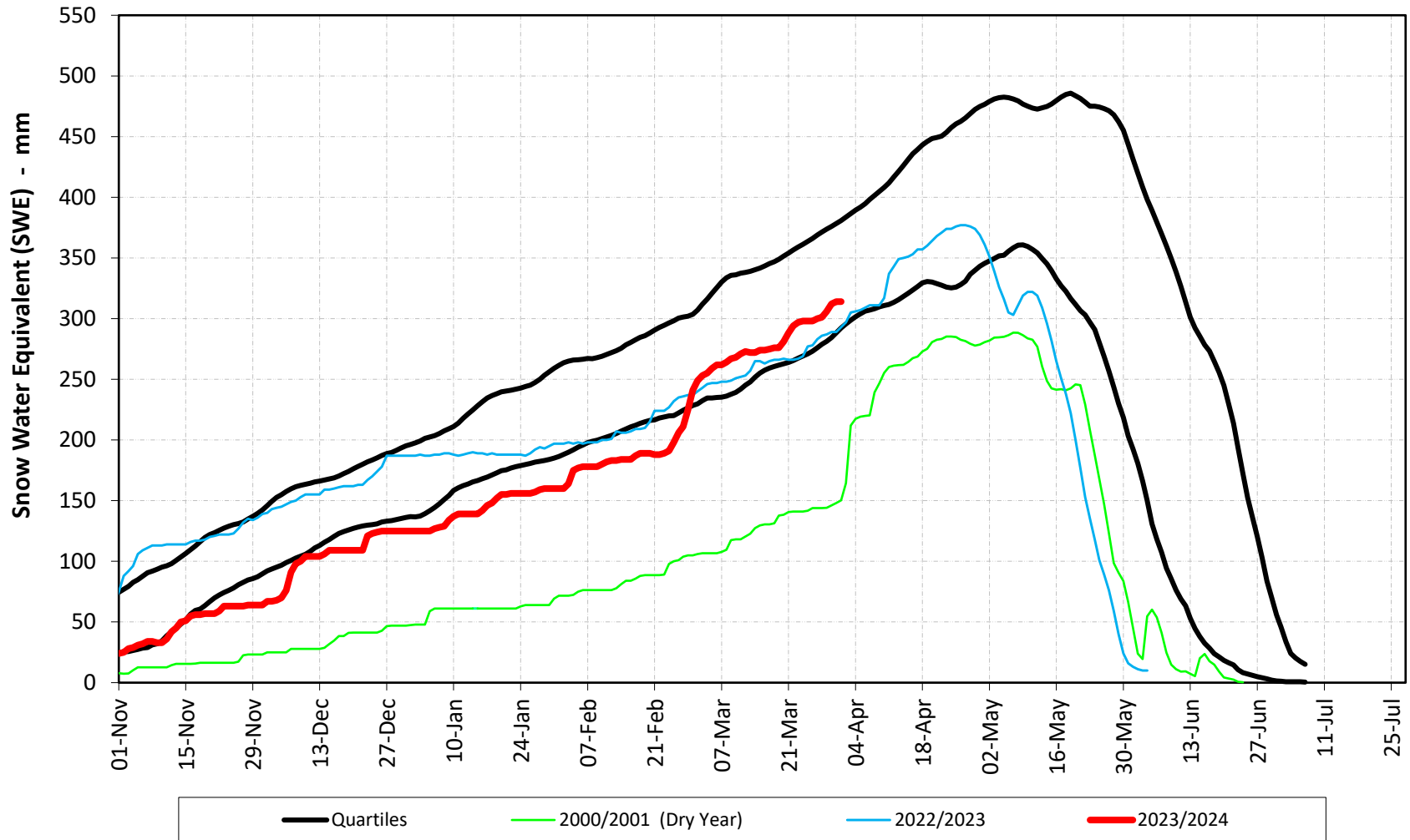
(Kananaskis\Bow River Headwaters)
2160 metres



2023/2024

Little Elbow Snow Pillow

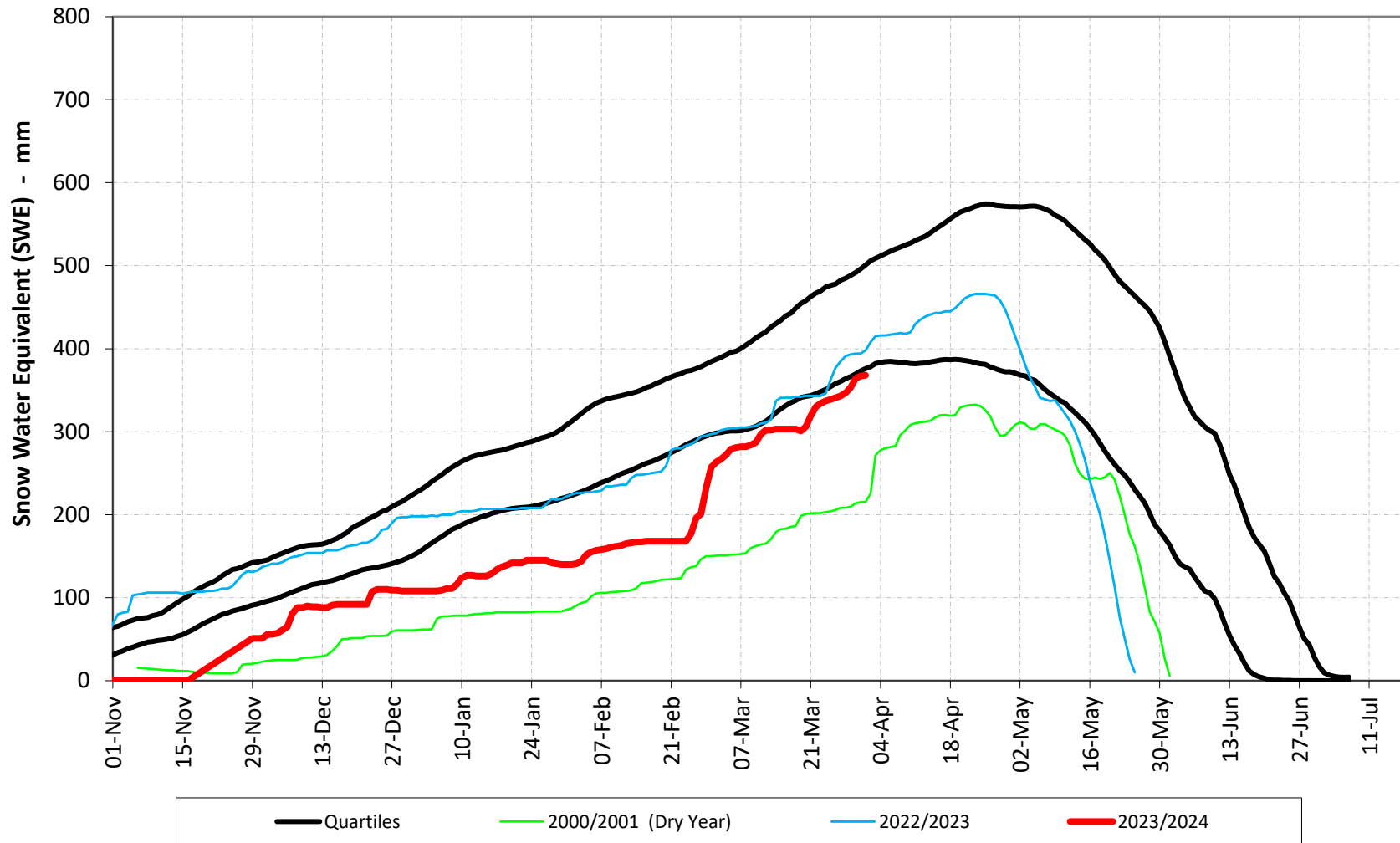
(Elbow River Headwaters)
2120 metres



2023/2024

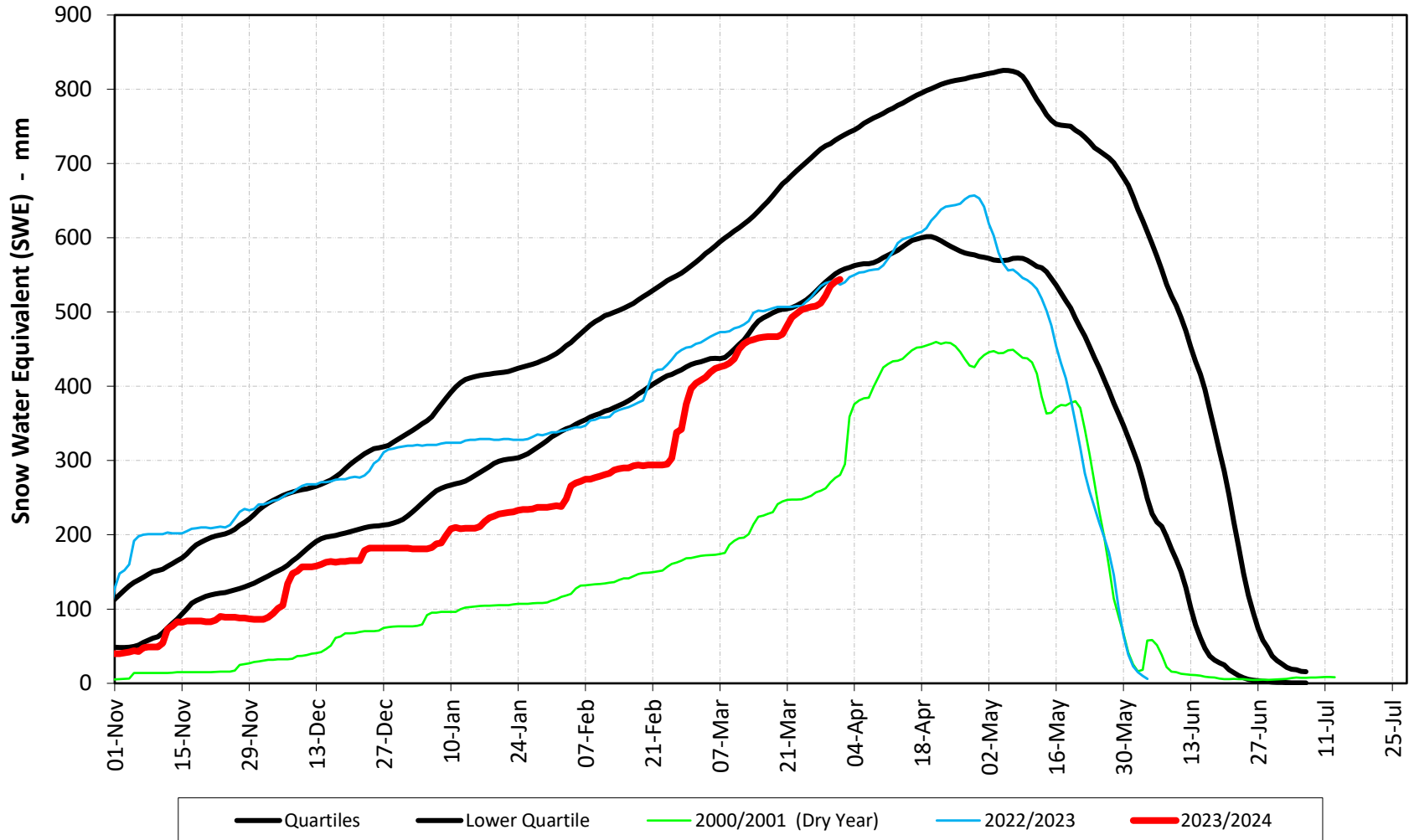
Mount Odlum Snow Pillow

(Highwood River Headwaters)
2060 metres



2023/2024 Lost Snow Pillow

(North Fork Oldman & Highwood River Headwaters)
2130 metres



SNOW SURVEY - SNOW WATER EQUIVALENT (mm)

STATION	Surface Catchment	HISTORICAL DATA FOR: April				2023 - 2024							2022 - 2023							2021 - 2022							2020 - 2021						
		Historical Minimum	Historical Mean	Historical Maximum	2024 % of Mean	Dec-23	Jan-24	Feb-24	Mar-24	Apr-24	May-24	Jun-24	Dec-22	Jan-23	Feb-23	Mar-23	Apr-23	May-23	Jun-23	Dec-21	Jan-22	Feb-22	Mar-22	Apr-22	May-22	Jun-22	Dec-20	Jan-21	Feb-21	Mar-21	Apr-21	May-21	Jun-21
Akamina	Waterton River					104	91	87	297	-			153	240	267	425	451	396		45	219	348	459	480	440	44	115	278	323	464	447	423	0
Iceberg	St. Mary River					-	-	-	-	-			-	-	-	-	-	627		-	-	-	-	-	762		-	-	-	-	-	-	
Josephine Lower	St. Mary River					-	-	-	-	-			-	-	-	-	-	282		-	-	-	-	-	427		-	-	-	-	-	-	
Many Glacier	St. Mary River								145	-																							
Mt. Allen	St. Mary River					-	-	-	-	-			-	-	-	-	-	816		-	-	-	-	-	1074		-	-	-	-	-	-	
Peigan Pass	St. Mary River					-	-	-	-	-			-	-	-	-	-	834		-	-	-	-	-	958		-	-	-	-	-	-	
Ptarmigan Lake (US)	St. Mary River					-	-	-	-	-			-	-	-	-	-	688		-	-	-	-	-	919	-	-	-	-	-	-	757	
Lee Creek Q	St. Mary River					-	-	29	86	-			-	-	121	158	185	42		-	-	92	112	60	0	-	-	-	75	96	27	0	
Gardiner	Castle Headwaters	387	703	993	86%	111	-	367	501	606			-	-	504	593	659	603		135	-	553	-	678	770	611	162	-	404	570	533	568	397
Lost Creek South	N. Oldman/Sheep/Highwood Headwaters	212	505	825	81%	57	-	209	323	411			183	-	287	388	468	526		206	-	432	518	560	661	649	158	-	-	427	524	598	519
Allison Pass	Upper Oldman River	247	438	757	90%	-	-	167	296	396			-	-	242	314	370	369		-	-	291	388	459	481	-	-	-	253	326	426	454	
South Racehorse Creek	Upper Oldman River	236	391	589	94%	45	-	184	290	368			159	-	253	330	378	361		107	-	321	394	438	501	301	90	-	248	339	424	425	228
Westcastle II	Upper Oldman River	70	328	554	59%	-	-	76	145	193			-	-	188	243	243	165		-	-	222	277	242	278	-	-	-	177	220	226	117	
Gros Ventre Middle	Ross-Bullshead-Seven Persons Creeks					-	25	27	-	-			-	98	144	175	-	-		-	14	72	-	-	-		-	80	86	-	-	-	
Gros Ventre Upper	Ross-Bullshead-Seven Persons Creeks					-	17	18	-	-			-	84	120	164	-	-		-	14	69	-	-	-		-	60	61	-	-	-	
Mitchell Creek Lower	Ross-Bullshead-Seven Persons Creeks					-	21	31	-	-			-	97	127	141	-	-		-	27	58	-	-	-		-	59	63	-	-	-	
Mitchell Creek Upper	Ross-Bullshead-Seven Persons Creeks					-	19	21	-	-			-	97	158	193	-	-		-	21	81	-	-	-		-	98	105	-	-	-	
Ross Creek Lower	Ross-Bullshead-Seven Persons Creeks					-	28	26	-	-			-	123	153	201	-	-		-	24	90	-	-	-		-	114	133	-	-	-	
Ross Creek Upper	Ross-Bullshead-Seven Persons Creeks					-	15	20	-	-			-	67	104	201	-	-		-	12	60	-	-	-		-	60	66	-	-	-	
Ptarmigan Hut	Bow River					-		187	259	-			-	-	174	-	271	295		-	-	440	523	548	546	504	-	-	344	409	447	447	238
Sunshine Village	Bow River					81	176	239	337	-			167	257	280	373	428	489		345	478	542	652	697	744	690	233	-	437	546	651	686	594
Three Isle Lake	Bow River					99	175	269	344	-			184	322	-	-	486	571		-	446	520	663	731	683	803	-	-	440	586	677	680	613
Little Elbow Summit	Little Elbow Headwaters					81	136	154	216	-			134	197	-	-	300	343		-	302	329	372	446	466	464	-	-	252	322	379	448	393
Mount Odium	Highwood Headwaters					52	134	166	245	-			-	228	-	-	372	416		-	394	425	-	573	623	412	-	-	339	421	501	533	331
Wilkinson Summit Bush	Sheep, Highwood Headwaters	100	194	323	124%	-	-	106	218	240			-	-	176	228	278	228		-	-	156	198	188	222	-	-	-	-	184	230	228	
Wilkinson Summit Open	Sheep, Highwood Headwaters	66	143	239	157%	-	-	101	202	224			-	-	178	228	282	201		-	-	130	176	155	196	-	-	-	149	165	225	176	
Limestone Ridge	Red Deer River	58	149	224	130%	-	93	109	151	193			-	-	137	173	204	223		-	-	-	114	157	202	118	-	-	96	127	143	135	0
Skoki Lodge	Red Deer River					-	-	181	245	-			-	-	161	-	262	293		-	-	401	457	501	541	460	-	-	315	395	421	446	274

" - " indicates no measurement has been taken for that month as of the time of publishing.
*Historical data for Akamina is based on previous site location