

# 2021

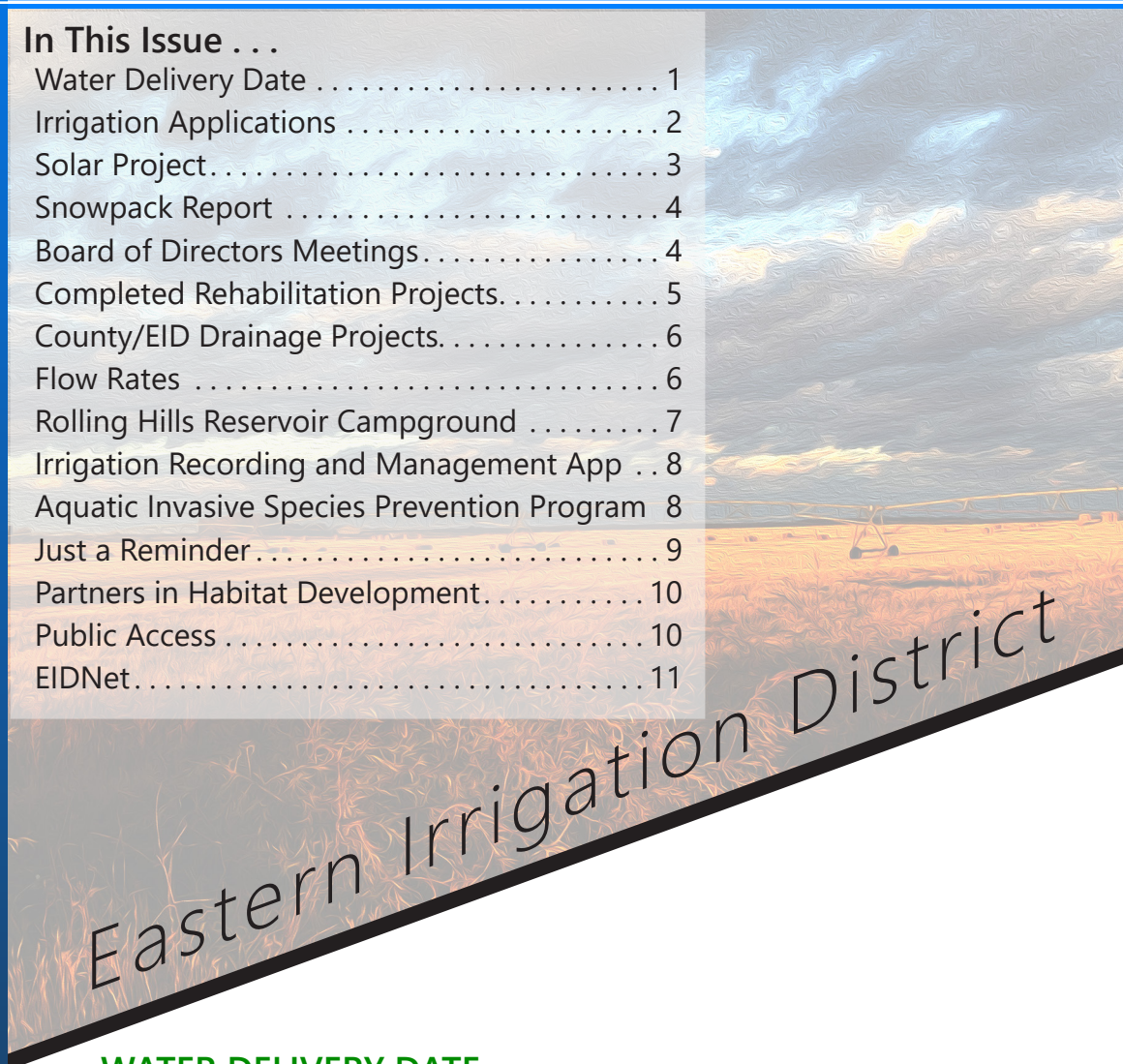
# IRRIGATION UPDATE



Publication Date  
May 4, 2021

## In This Issue . . .

Water Delivery Date . . . . .	1
Irrigation Applications . . . . .	2
Solar Project . . . . .	3
Snowpack Report . . . . .	4
Board of Directors Meetings . . . . .	4
Completed Rehabilitation Projects . . . . .	5
County/EID Drainage Projects . . . . .	6
Flow Rates . . . . .	6
Rolling Hills Reservoir Campground . . . . .	7
Irrigation Recording and Management App . . . . .	8
Aquatic Invasive Species Prevention Program . . . . .	8
Just a Reminder . . . . .	9
Partners in Habitat Development . . . . .	10
Public Access . . . . .	10
EIDNet . . . . .	11



Eastern Irrigation District

Where Water  
Works Wonders

Phone: (403) 362-1400  
Fax: (403) 362-6206  
Email: [eid@eid.ca](mailto:eid@eid.ca)  
[www.eid.ca](http://www.eid.ca)

P.O. Box 128  
550 Industrial Road West  
Brooks, Alberta  
Canada T1R 1B2

## WATER DELIVERY DATE

In March, the Board set the date for the earliest water delivery for Thursday, May 6<sup>th</sup>, which is within the typical range of dates. However, Administration and Operations departments are always evaluating conditions as they unfold, and the suitability of the date is ultimately determined in April and adjusted if necessary, in response to weather conditions, irrigator demand, and operations capabilities.

It was apparent that an earlier water delivery date was needed.

To meet an earlier delivery date, Construction, Maintenance and Operation crews worked diligently within this narrowed timeframe and prioritized the necessary projects which required completion. In April, the feasibility was confirmed, and the Board approved an adjusted earliest water delivery date of April 25<sup>th</sup>. It was anticipated that the majority of the District would be ready for deliveries by the week of April 25<sup>th</sup>, although some systems may have had a delayed start where unknown winter damage had occurred.

# IRRIGATION UPDATE

## IRRIGATION APPLICATIONS

In February, water users voted in favour of passing the Expansion Limit Plebiscite, by a 75% majority of those voting. Once the plebiscite had passed, the following bylaws were approved:

- [2021 Expansion Limit Change Bylaw](#)
- [Irrigation Acres Bylaw](#)
- [Capital Assets Charges Bylaw](#)

For 2021 only, to accommodate increased demand and applications in queue, it was agreed to accept applications in April for irrigation acres that can be developed in 2021 by September 30<sup>th</sup>. Following is a summary of the outcomes:

### APPROVED IRRIGATION APPLICATIONS – FOR PROJECTS TO BE COMPLETED BY SEPTEMBER 30, 2021

	Total Applications	Approved Applications	Denied Applications	Approved Acres
<b>Infill</b> (12,000 acres of the 34,000 acre expansion are reserved for Infill)	27	24	3	947
<b>New Parcels – below Newell &amp; Crawling Valley Reservoirs</b> (60% of the 2,000 acres/year max or 1,200 acres)	10	8	2	1,251*
<b>New Parcels – not below Newell &amp; Crawling Valley Reservoirs</b> (40% of the 2,000 acres/year max or 800 acres)	36	12	24	846*

*\* Clause 10.0 of the Irrigation Acres Bylaw: The Board reserves the right, by its motion, to vary, alter or waive any criteria, guidelines and rules established by this bylaw when, in the opinion of the Board, a variance or waiver of such criteria, guideline or rule is considered to be in the best interest of the District.*

Additional acres were approved to enable projects to be fully developed. Once projects are completed and finalized, the approved number of acres will be verified. Any carry forward acres from projects that are not completed will be applied to the next irrigation season's maximum allotment.

Applications for projects requiring 50 or less irrigation acres to be added to existing irrigation parcels will be received throughout the year. The process for applying for irrigation acres over 50 acres or for projects on dry parcels now reverts to the annual review in fall.

### NEED SOILS?

All proposed projects need to be reviewed according to the parcel's historical soils information and various other criteria. If you have been advised that soils testing is required on your parcel, or have any questions, please call Staci Connauton at 403-362-1400.

#### Land Classification for Irrigation in Alberta

- [https://www1.agric.gov.ab.ca/\\$department/deptdocs.nsf/all/agdex705/\\$file/560-3.pdf?OpenElement](https://www1.agric.gov.ab.ca/$department/deptdocs.nsf/all/agdex705/$file/560-3.pdf?OpenElement)

#### Registered Agrologists

- <https://open.alberta.ca/publications/list-of-consulting-agrologists-for-land-classification-for-irrigation-development-in-alberta>





# IRRIGATION UPDATE

## SOLAR PROJECT

Following lengthy discussions and negotiations, the EID and Solar Krafte Utilities Inc. ("SKU") recently executed a land lease on favorable terms for a 400-Megawatt solar project being proposed by SKU. The solar project is being sited for EID lands located at Sections 19, 29 & 30, S1/2 of Sections 31 & 32, N 1/2 of Section 18, W1/2 of Section 28 and SW 33-18-15 W4M as well as Section 24-18-16 W4M and on adjacent third-party private lands. For ease of reference these lands are located adjacent to the AltaLink Cassils Substation as outlined in red on the map.

The EID owns approximately 3600 acres of the 3900 acres being initially sited for the project. The project is expected to be completed in phases with construction targeted to commence in late 2021 and operations continuing over the next 30 years and beyond.

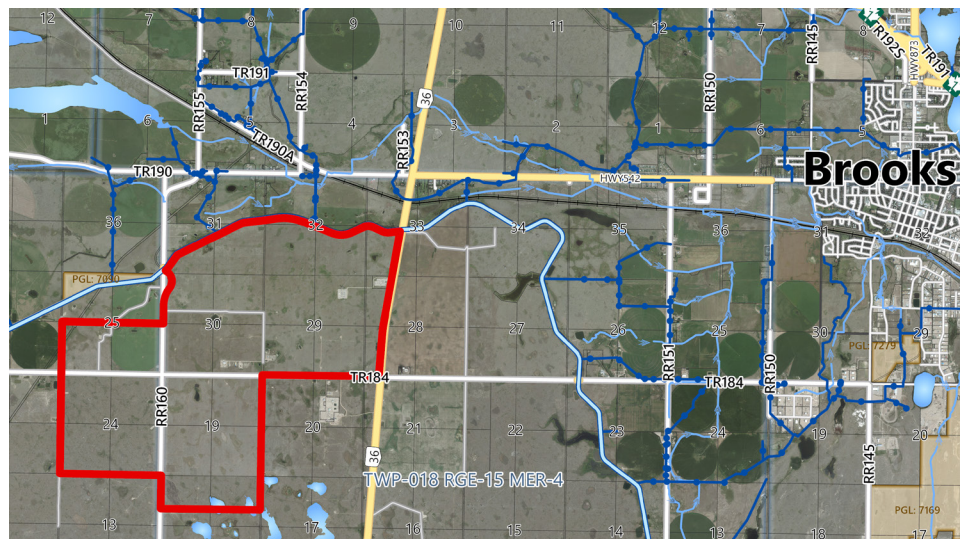
The EID lands are currently being used for grazing purposes and are also densely populated with oil and gas wells and related pipeline infrastructure. The actual acreage required for the project has yet to be finalized by SKU but the final footprint will take into account pre-existing oil and gas lease and pipeline easement locations, electrical utility infrastructure, wildlife features, and any other appropriate setbacks.

Features of this project are:

- Low profile solar panel system minimizing visual impact.
- Horizontal panel trackers, allowing the panels to follow the sun as it arcs across the sky.
- Minimal grading and no paving of the proposed site.
- But for centralized transformer and inverter pads, no cement footings.
- Pile driven steel post substructure.
- No substantial permanent increase in ambient noise levels.
- Array layout configuration integrated into and layered over conventional energy production.
- Subsidy free project.

In addition to adhering with the regulatory conservation and reclamation requirements for renewable energy operations, as set out in Section 137 of the Environmental Protection and Enhancement Act, as administered by Alberta Environment and Parks pursuant to the Conservation and Reclamation Directive for Renewable Energy Operations, SKU will also cooperate with the EID to permit the EID to use portions of the leased lands for appropriate livestock and agribusiness operations which do not otherwise interfere with SKU's solar project.

The total capital cost of the proposed project is expected to approach \$500 million and will provide an important source of direct and indirect economic activity to the



County of Newell and City of Brooks. Additionally, producing clean, renewable power without emissions or waste, the proposed project is estimated to offset 470,000 tonnes of greenhouse gas emissions annually, generating enough electricity to power more than 90,000 Alberta homes.

This solar project provides a unique opportunity for the EID to participate in a large renewable energy project utilizing lands otherwise densely populated with conventional oil and gas, and electrical utility energy infrastructure, enabling the EID to diversify its future revenue streams.

# IRRIGATION UPDATE

## SNOWPACK REPORT

The District follows data on 6 mountain snowpack pillows for accumulation and spring melt, signaling spring and summer river flows. Upper and lower quartiles, previous year, and current year data is displayed. Of equal importance to accumulation is the timing and speed in which snowpack melts, with seasonal temperatures and rain in the mountains both contributing to melt and river flows. Major snow pillows that are monitored are Skoki (also the Red Deer River headwaters), Sunshine (Bow River headwaters),

Three Isle Lake (Kananaskis/Bow River headwaters), Little Elbow (Elbow River headwaters), Mount Odium (Highwood River headwaters), and Lost (north fork Oldman River and Highwood River headwaters).

As of the end of April, snow pillows are currently tracking below or at the upper quartile, with no indication of a decline at this point. These levels are slightly below last year's levels.

<https://rivers.alberta.ca/>

### WATER ORDERS

It is important to communicate with your Water Operator for **ON/OFF** requests of your irrigation systems. Please remember to phone or text at least 48 hours prior to your intended irrigation start-up and at least 24 hours in advance of your intended shut-down. This helps ensure the most efficient operation of the irrigation delivery system. Irrigators are kindly asked not to request water deliveries to be made on Sundays.



### COMMUNITY GRAZING TURN-OUT DATE

- May 3<sup>rd</sup> for Regrass/Tame Pasture
- May 15<sup>th</sup> for Native Pasture



## BOARD OF DIRECTOR MEETINGS

Regular Board of Director Meetings are typically held on the 4<sup>th</sup> Tuesday of each month, with variance to the date as required. Agenda items are prepared in advance and depending on the matter, may require up to several days or a few weeks to research, obtain and prepare the necessary information. If you have a

submission, whether directly from yourself or through staff or a Director, please be sure to contact us well in advance of the preferred Board Meeting in order to determine if it may be possible to schedule your matter onto the applicable Board Meeting agenda.

# IRRIGATION UPDATE

## COMPLETED REHABILITATION PROJECTS

Over the past 20+ years, the District has directed over \$400 million (mostly from oil & gas revenues) into infrastructure rehabilitation. This \$20 million/year average has resulted in an irrigation conveyance system of 13 storage reservoirs, 1,300 km of pipelines, 750 km of canals, 2,000 km of drains, and over 2,500 water control structures. In recent years, an emphasis has also been put on automated control structures, automation potential for systems, and IRMA (Irrigation Recording & Management App).

Potential rehabilitation projects are rated using policy guidelines and through consultation with Engineering and Operations Departments. Through policy, the projects are preliminarily planned and presented to the Board in a 3-year format, then fully engineered and presented for final review and approval by the Board, prior to the construction season. As is typical for the EID, almost all projects continue to be designed, managed, and constructed in-house by EID staff.

The 2019 construction season was the first time 54" diameter PVC pipe was used within the District; 750 m of this pipe was installed without any issues. 60" pipe size was used in the 2020/2021 construction season with equal results. The District completed the following rehabilitation projects this past construction year:

### CAPITAL CONSTRUCTION PROJECTS Completed during the 2020/2021 Construction Season

Project	Status	Approved Estimate	Potential Gov't Funding
<b>EARTHWORKS</b>			
West Bantry Canal: Reach 2	<ul style="list-style-type: none"><li>the West Bantry Canal serves 21,798 irrigation acres, through a total length of 10 km</li><li>it has a bed width of 7 m and a flow of 410 cfs</li><li>the project has been separated into 3 phases</li><li>Reach 1 was completed in the 2019/2020 construction season</li><li>Reach 2 was completed this spring, for a total length of 2.5 km</li><li>Reach 3 is planned for 2021/2022</li></ul>	\$650,000	n/a
<b>PIPELINE</b>			
C Springhill	<ul style="list-style-type: none"><li>serves 6,200 irrigation acres and eliminates spill, enabling the unused water to remain in Rock Lake Reservoir</li><li>pipeline length of 10 km, design flow of 95 cfs</li><li>the majority of the existing canal was reclaimed</li></ul>	\$11,385,000	30%
01-C Springhill	<ul style="list-style-type: none"><li>serves 1,757 irrigation acres and eliminates spill, enabling the unused water to remain in Rock Lake Reservoir</li><li>pipeline length of 6 km, design flow of 35 cfs</li></ul>	\$5,112,000	30%
9-H West Bantry	<ul style="list-style-type: none"><li>will serve 594 irrigation acres</li><li>pipeline length of 1.8 km replaced the existing canal, design flow of 7.5 cfs</li></ul>	\$957,000	30%
10-H West Bantry	<ul style="list-style-type: none"><li>serves 1,117 irrigation acres</li><li>pipeline length of 5.5 km replaced the existing canal, design flow of 22 cfs</li></ul>	\$2,892,000	30%
16-H West Bantry	<ul style="list-style-type: none"><li>serves 1,112 acres</li><li>pipeline length of 3.3 km replaced existing canal, design flow of 20 cfs</li></ul>	\$2,266,000	30%

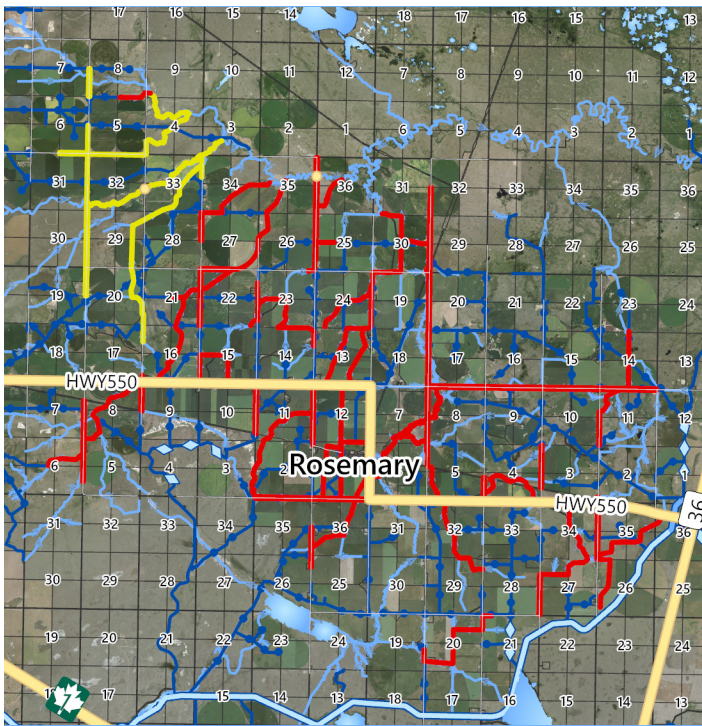
### EID 1<sup>st</sup> CALLS

The EID will locate its waterlines at no cost to water users and residential landowners. If you plan to do any digging and you know or are unsure if EID works are in the area, please call (403) 362-1400 before you dig.



# IRRIGATION UPDATE

## COUNTY/EID DRAINAGE PROGRAM



The County/EID Drainage Program is a partnership that was formed in 2011 to mitigate overland flooding and improve the drainage in problem areas throughout the County/District. The costs of this partnership are split 50:50, with the EID completing the design and construction. At the outset, areas were assessed and rated so that those with the most critical needs could be given priority. Initially, both parties contributed \$1.5 million to activate the program; currently both parties contribute \$1 million/year to continue improvements. Over the last 10 years the program has enabled the rehabilitation of over 230 km of County road borrow ditches and EID drains in the Rainier, Scandia, Millicent, Cassils and Rolling Hills areas.

Last year, 7.0 km of drains were improved in the Bow City area. The next stage of the Drainage Program is located in the Rosemary area. The overall project of 200 km is split into 7 phases. Phase 1 will consist of 28 km in the northwestern portion, with drainage work commencing this summer.

## FLOW RATES

A parcel's total water usage for the irrigation season is calculated using the irrigation system's designated flow rate and the periods of time quantified between ON date & time and OFF date & time water orders. Water users may contact their Water Operator to obtain flow rates and usage volumes for their parcels, however for fully accessible, real time information and monitoring of your water usage, please refer to the IRMA article on page 8.

All types of irrigation methods have a designated or measured flow rate. If you have any concerns or questions regarding a flow rate on any of your irrigation systems, please contact your Water Operator or your Divisional Superintendent so that remeasuring may occur at the outset of the irrigating season. In particular, the District encourages water users to have their pivot or wheel flow rates metered for accuracy if, for example, the pivot has been renozzled.

### Farm Delivery Design Flow Rates

Method	Cubic Feet/Second
<b>Flood Irrigation</b>	
20 acres	1.0 cfs
40 acres	2.0 cfs
60 acres	3.0 cfs
80 acres	4.0 cfs
120 acres	5.0 cfs
> 150 acres	6.0 cfs
<b>Sprinkler Irrigation</b>	
< 40 acres	1.0 cfs
80 acres	2.0 cfs
80 – 135 acres	3.0 cfs
135 – 250 acres	3.0 cfs – 4.5 cfs
> 250 acres	7 gal/min/acre

# IRRIGATION UPDATE

## ROLLING HILLS RESERVOIR CAMPGROUND

In 2002 during enhancement activities to increase the storage capacity of the Rolling Hills Reservoir, the District began construction of the Rolling Hills Reservoir Campground as a community investment initiative to benefit water users and the general public. The campground has been expanded in past years and is now well established with mature trees, and has large, electrified sites containing graveled pads and a grassy area in each. Several improvements have been added over the years; amenities now include:

- 110 daily camping sites, 2 group areas, and 35 seasonal sites.
- 2 sandy beaches with sheltered swimming areas, and an on-leash dog beach.
- Marina with boat launch and 82 boat slips, plus loading and unloading boat slips.
- 2 playgrounds.
- Washrooms, shower, and laundry facilities.
- Potable water access and sani-dump station.
- Wi-Fi available throughout the campground.

To guarantee water user access to the campground, a minimum number of seasonal sites are reserved for applications from water users, as well as the opportunity to reserve a daily site up to 48 hours in advance of the first night's stay, with payment by credit card. The water user making the reservation for a daily site must be the camper staying on the site. Both water users

and the public are required to book the length of their stay at the original time of booking. Should there be an open site (not prebooked by a water user) at the time of checkout, a camper may choose to extend their stay up to the maximum 14 days combined with their original booking. This process allows more opportunity for the public to secure a daily site as well.

If you've never visited our campground, please consider stopping by this increasingly popular destination to have a look at all that is offered.

<https://www.eid.ca/rhrcampground.html>

Subject to weather conditions, the Rolling Hills Reservoir Campground will open for the season this year at 8:00 a.m. on Friday, May 14th and close at noon on Thursday, September 30, 2021.



Camping at Rolling Hills Reservoir Campground

## ROLLING HILLS RESERVOIR CAMPGROUND

	Fees	Booking / Reservations / Draw
<b>Daily Camping</b>		
110 daily sites	\$40/night (GST included) plus \$5/day for 50 amp sites	<ul style="list-style-type: none"><li>• all daily sites are on a first-come, first-served basis</li><li>• water users may reserve daily sites up to 48 hours in advance, with payment by credit card, by calling the campground directly (403) 363-5603</li><li>• Public may hold a site the day of, by calling the campground directly</li></ul>
<b>Group Camping</b>		
2 group areas of 5 single sites each	\$200/night, minimum of 2 nights, plus \$25 reservation fee (GST included)	<ul style="list-style-type: none"><li>• Group Areas may be reserved through payment, up to 2 camping seasons in advance, by calling the EID Office (403) 362-1400</li><li>• a minimum of 2 nights must be reserved for a group area, up to a maximum stay of 14 nights</li></ul>
<b>Seasonal Camping</b>		
35 seasonal sites	\$3,200/season + GST	<ul style="list-style-type: none"><li>• the deadline for submitting an application for a seasonal camping site was April 5th, with the draw being held April 13th</li></ul>
<b>Boat Slips</b>		
82 boat slips	\$10/day (GST included) \$60/week (GST included) \$475/season + GST	<ul style="list-style-type: none"><li>• all seasonal boat slip applications, agreements and payments must be completed by 5:00 p.m. on May 3rd</li><li>• daily and weekly boat slips can be reserved through the campground office during the season</li></ul>

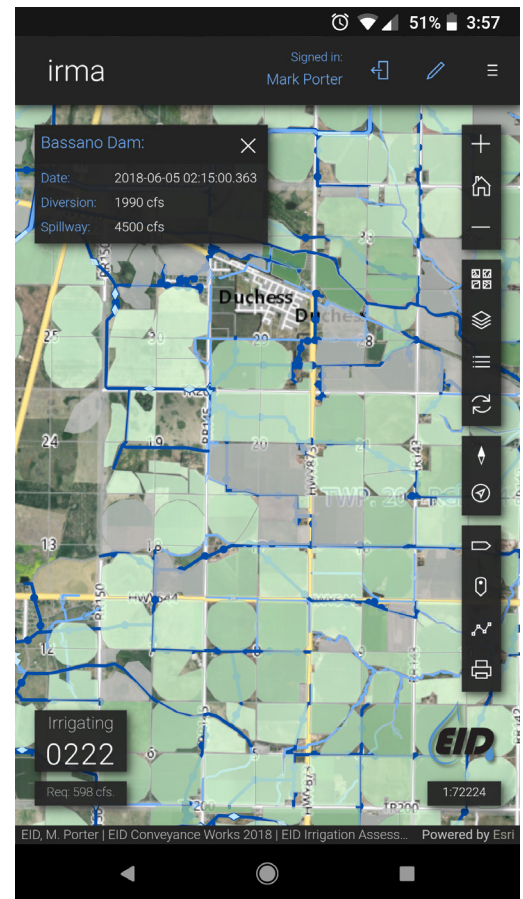
# IRRIGATION UPDATE

## IRRIGATION RECORDING AND MANAGEMENT APP (IRMA)

IRMA is a web mapping tool that has been developed in-house and is used by EID Water Operators to record water usage, irrigation method, and crop type on all irrigated parcels during the irrigation season. Since the initial version in 2012, several enhancements to IRMA have been made and development continues to add features essential for District Staff and water users in their decision-making processes.

Water users may access IRMA to view their water usage in real time (colour coded by amount used) for the current water season on a smart phone, tablet, laptop or computer. Planned future enhancements to IRMA include smoother and more convenient usage on a smart phone, personal water consumption reports, map based water ordering, potential soil moisture estimation, and the ability to send out District notifications to water users. Other in-house advancements have improved Field Staff capabilities, communications and reporting, and plans are to integrate the District's infrastructure automation system.

Call Mark Porter, Information Services Supervisor at (403) 362-1400 or email [mark.porter@eid.ca](mailto:mark.porter@eid.ca) for any questions you may have, and to get signed up for this useful app. [Access IRMA](#)



## AQUATIC INVASIVE SPECIES (AIS) PREVENTION PROGRAM

Invasive species are non-native plant or animal species, introduced intentionally or unintentionally from other countries or areas. Aquatic invasive species (AIS) establish in water bodies and are of particular concern to irrigation districts and irrigation farmers. Vegetation such as flowering rush, fish species like Prussian Carp, and Zebra and Quagga Mussels continue to be a threat, and all have the potential to negatively impact irrigation infrastructure. Once established, invasive mussels will clog water delivery infrastructure and change the ecological make up of irrigation reservoirs.

The District has actively lobbied government for the continued support of inspection stations at the critical points of entry into the province. The District's major reservoirs continue

to be monitored and tested for invasive mussels by District staff and Alberta Environment & Parks. As well, District staff are monitoring downstream within our canal systems for evidence of these mussels. No signs of mussels within District infrastructure have been found to date.

Furthermore, as movement of AIS into new areas mainly occurs by travelling watercraft, the EID initiated the AIS Prevention Program. ALL BOATERS wishing to access EID reservoirs must:

- Follow approved prevention procedures:
  - Clean, drain and dry all watercraft and gear after use in any waterbody.
  - If you are returning to Alberta please call 1-855-336-BOAT (2628) to arrange an inspection of your watercraft. It is mandatory for all watercraft to stop for an inspection upon returning to Alberta.



Article continues on page 9



# IRRIGATION UPDATE

- Each year complete a watercraft information form stating they will not knowingly spread aquatic invasive species. Boaters can visit Lake Newell Resort Marina, Rolling Hills Reservoir Campground, or Crawling Valley Campground to register for the program.

required to check in with the campground, marina, or EID Office prior to launching.

In collaboration, the County of Newell passed the "Boating Safety and Aquatic Invasive Species" bylaw to give County Peace Officers more authority to enforce regulations around the EID AIS Prevention Program.

As part of the program:

- Trailer watercraft must only be launched from approved boat launches.
- Canoes, kayaks and other non-trailer watercraft may continue to be launched at random locations.
- All boaters (trailer and non-trailer) are

Help do your part to prevent the introduction of invasive mussels to this area. To enroll in the program or for more information, contact Brandi Doerksen, Land Administrator – Aquatic Invasive Species, [brandi.doerksen@eid.ca](mailto:brandi.doerksen@eid.ca) (403) 363-9694, <https://www.eid.ca/ais.html>. Following are the 2019 and 2020 AIS Prevention Program statistics within the EID.

REGISTRATION LOCATION	YEAR	LOW RISK	FROM OUT OF PROVINCE	FROM OUT OF COUNTRY	HIGH RISK	DISALLOWED ENTRY	TOTAL
Crawling Valley Reservoir	2020	1,354	28	1	15	8	1,406
	2019	860	66	7	18	0	951
Lake Newell Resort Marina	2020	389	10	0	4	2	405
	2019	121	4	1	2	1	129
Lake Newell Reservoir	2020	1,634	73	0	31	8	1,746
	2019	709	57	8	35	6	815
Rolling Hills Reservoir	2020	822	19	0	11	0	852
	2019	494	33	10	32	1	570
EID Office	2020	37	1	0	0	0	38
	2019	171	7	0	6	3	187
Other	2020	5	0	0	0	0	5
	2019	0	0	0	0	0	0
TOTALS	2020	4,241	131	1	61	18	4,452
TOTALS	2019	2,355	167	26	93	11	2,652

## JUST A REMINDER...

Please understand that District Office and Field Staff are working hard to accomplish the entire scope of their responsibilities, at times within rigorous and tight deadlines. Staff endeavour to communicate with all water users and the public in a timely and professional manner and kindly request this courtesy in return. Should you have any concerns or issues, please contact the District Office and ask for the applicable Supervisor who oversees the applicable role or function being performed.

# IRRIGATION UPDATE

---

## PARTNERS IN HABITAT DEVELOPMENT

---

The Partners in Habitat Development program was started by the EID and Pheasants Forever in 1998 with the intent of restoring upland gamebird habitat in southern Alberta. The current focus of the program is planting shelterbelts in the EID, but other habitat development or enhancement opportunities are considered on a case-by-case basis. Typically, planting sites are on pivot corners, field edges, and tame pasture. Site size may range from a couple of hundred to a couple of thousand seedlings. For 2021, the PHD program will be planting approximately 7,000 seedlings in 4 different sites in the EID, performing any necessary re-plantings, and maintaining 6 sites from last year. Currently, applications are being accepted for projects in 2023 and beyond.

For more information about the PHD program you can review the PHD brochure [https://www.eid.ca/documents/publications/Brochure\\_PHD\\_2021.pdf](https://www.eid.ca/documents/publications/Brochure_PHD_2021.pdf) or contact Daniel Buell, Land Administrator – Habitat, Wildlife & Access at [daniel.buell@eid.ca](mailto:daniel.buell@eid.ca) or (403) 362-1414.

## PUBLIC ACCESS

---

The EID owns approximately 600,000 acres of land, with the majority being native prairie grassland. These privately owned lands are managed with a multi-use philosophy. The majority of the land is managed as community grazing leases in support of the irrigators and the local cattle industry. Industrial development, wildlife habitat development and maintenance, and public access are also allowed on EID owned land in support of the local economy. Public access is generally permitted on most EID owned lands, however the EID may at any time close all or part of its land to access.

The EID's Access Policy sets out the rules and restrictions concerning access to District owned lands. Issues are ongoing concerning a number of violations. The District would appreciate all users to be respectful of the rules and, for example, ensure no waste or

abandoned structures are left behind. The District encourages anyone wishing to access its lands to familiarize themselves with the current District policy.

For public access onto EID Community Pastures, highway vehicles are required to remain on established roads and trails, if no designated route is present, and to park on the shoulder (approximately one vehicle width). Off-highway vehicles, campfires, and camping are NOT permitted in Community Pastures.

The start of the open water fishing season is May 8th. Current spring conditions are dry; if warranted, extra access restrictions may be added. Check the EID website or call the EID office to confirm current restrictions before accessing EID lands.

[Click HERE to view the policy.](#)



Abandoned trailer and campsite along Rolling Hills Reservoir.



Garbage dumped at the south end of Lake Newell Reservoir.



# IRRIGATION UPDATE



PHD Tree Planting Site

## EIDNET

EIDNet has a network of 18 towers serving more than 1,800 local farms, ranches, businesses, and individuals in community hubs and outlying rural areas. It was established in 1995 to service the local rural areas that would have otherwise been without any internet access, or affordable access. EIDNet has been a leader, by always providing unlimited data usage and guaranteed speeds; and has improved and expanded the business over the last 25 years.

Internet usage has become an integral part of business and everyday life for our customers, with usage possibilities and demands continually increasing. Similarly, the Canadian Radio-television and Telecommunications Commission (CRTC) states that internet service providers should be able to deliver internet accounts capable of providing 50.0 Mbps download speed / 10.0 Mbps upload speed by the end of 2021. In predicting the increase demand in the bandwidth required by our customers, comprehensive investigation and planning was initiated for an 8 phase fibre optic build. Phase 1 of the project to connect the Brooks, One Tree, Duchess and Rosemary towers with a fibre network at an estimated cost of \$3,000,000 was approved in 2020. Upon completion of additional analysis and routing considerations, the project was reconfirmed to proceed. The fibre path and engineering have been finalized and the ordering of materials has begun. Construction is expected to commence in the summer of 2021, with an estimated Phase 1 completion date of November 2021.

If you have any questions regarding the fibre project, your account, or the services provided, please call (403) 362-1401. EIDNet also offers custom accounts, access points, and point-to-point kits. [EIDNet Web Site](#)

### RATE PLANS AND SERVICES

Available Plans	Download/Upload	Cost/Month	Rate Payer Cost/Month
Regular	3.0 Mbps / 2.0 Mbps	\$50.00	\$20.00
Fast	6.0 Mbps / 3.0 Mbps	\$65.00	\$50.00
Premium	9.0 Mbps / 3.0 Mbps	\$80.00	\$65.00
Ultra	20.0 Mbps / 4.0 Mbps	\$110.00	\$95.00
Office 2	6.0 Mbps / 5.0 Mbps	\$120.00	\$105.00
Office 3	9.0 Mbps / 7.0 Mbps	\$175.00	\$160.00
Super Office	50.0 Mbps / 10.0 Mbps	\$300.00	\$285.00

### Did you know...

During the summer months, as many as 300 labourers worked on the construction of the Brooks Aqueduct.





**Eastern Irrigation District**  
P.O. Box 128  
550 Industrial Road West  
Brooks, Alberta  
Canada T1R 1B2

[www.eid.ca](http://www.eid.ca)

All Annual Reports and Newsletters  
can be read online at:

**Please Note:**